

Lancaster Environment Centre Continuing Professional Development

Continuing Professional Development



- Offers a range of training solutions on the implementation of REACH for the chemicals industry.
- Workshops and bespoke in-house training programmes for businesses.
- Funded under the D4R programme



Continuing Professional Development



Lancaster University post-graduate training on REACH and broader SHE legislation

- CCM will lead a Continuing Professional Development programme on regulation in chemicals management
- New programme, HEFCE approved
- Staff recruitment now
- Expected delivery in 2008
- Designed to address established industry demand and identified skills gap.
- Courses will be designed in consultation with industry

Delivery

Course designed in consultation with an industry-led steering committee

Target provision will be for SMEs, non-SMEs, service providers

- Intensive single day events...
- Backed-up with ICT-enabled learning techniques...
- Some provided as web based materials.
- A range of course work that will assessed throughout....
- Assessment through reflective practice will be used as part of the structure.

Accredited CPD in REACH

Flexible modular structure, leading to...

- Range of qualifications/outcomes...
- Primary outcome = post-graduate certificate achieved by completion of an approved minimum number of modules.
- A post-graduate diploma and full MSc in Regulation in Chemicals Management will also be available.

Examples of modules

Implications of REACH, including

- Financial implications and planning
- Identifying and assessing alternatives
- Improving supply chain information flow
- Impact of REACH on SMEs

Pre-registration

Supply Chain Management

Substance characterization

Registration

Safety Data Sheets

Consortia and SIEFs

Chemical Safety Assessments

Environmental Risk Assessments

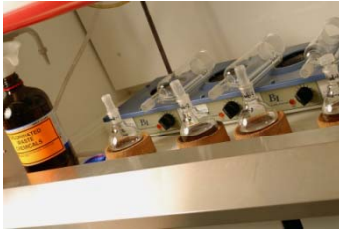
Substance dossier preparation

Authorisation and restrictions

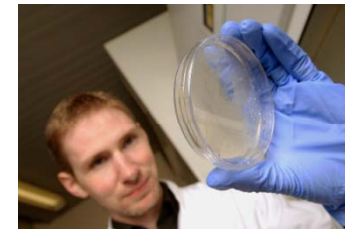
Placing REACH in context with other relevant legislation

Modules on other SHE legislation are planned to include IPPC, BPD, COMAH, GSH and ATEX.

LEC and CCM capabilities and resources



- Analytical facilities and method development capability
- Environmental fate and exposure modelling
- Human exposure assessment
- Risk Evaluation and Assessment
- Source inventories
- Occupational exposure assessment
- Ecotoxicological testing (CEH)
- Toxicological testing (e.g. genotoxicity assays)



LEC and The Reach Centre

Our ambitions for the relationship between the University and the Reach Centre are:

- To give 'real world' experiences of chemical management
- To provide industry with access to high quality environmental research and expertise on Reach
- To provide an integrated and tiered approach
- To provide the University with an income stream to continue its research and teaching activities